

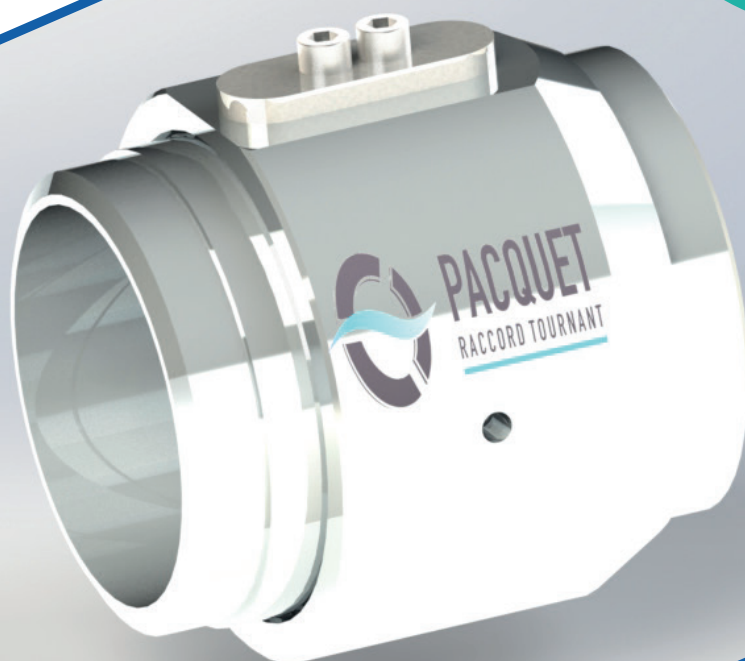


PACQUET
RACCORD TOURNANT

**CUSTOM & STANDARD
ROTARY UNIONS**

**LIQUID OR
GASEOUS FLUIDS**

**ASSEMBLE
YOUR TP1100 R
ROTARY UNION**



TP1100 R ADJUSTABLE ROTARY UNION

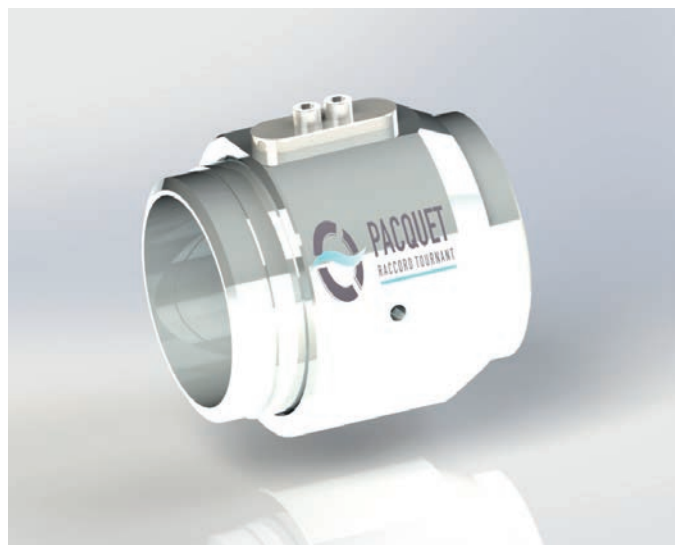
**ADJUSTABLE ROTARY UNION TO BE COMBINED
WITH OTHER WELD-ON PARTS**

Up to DN600 on request

TP1100 R ADJUSTABLE ROTARY UNION

ADJUSTABLE ROTARY UNION TO BE COMBINED WITH OTHER WELD-ON PARTS

Up to DN600 on request



Rotating joint that can be adjusted to suit your installation: construct your rotating union from our weld-on version!

Highly flexible design

Adapts to a wide variety of processes

STRENGTHS AND SPECIFICITIES

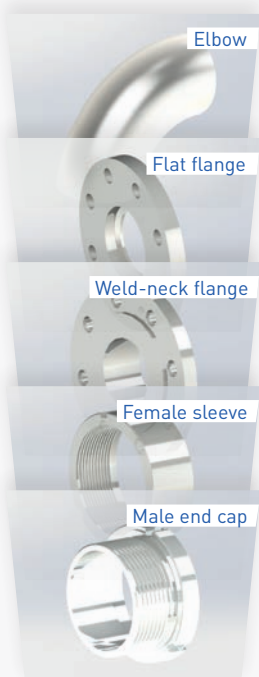
- Available in many NPSs as standard - up to NPS 24" on request
- Many combinations available: flat flanges, weld-neck flanges, non-standard flanges, end caps, sleeves, elbows, etc.
- Suitable for food processing - albeit with retention zones (radial sealing)

INTEGRATING A ROTATING CONNECTION ON AN EXISTING INSTALLATION CAN BE COMPLEX.

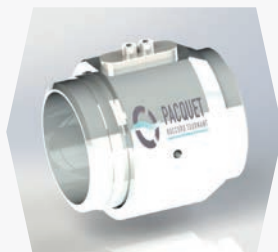
Integrating a rotating joint within an existing installation can be complex. As a result, we looked into the design of an adjustable swivel fitting: the TP1100 R. Flat flanges, weld neck flanges, any other specific flanges, sleeves, end caps, elbows: there are many combinations for ensuring a perfect fit with your installation.

ASSEMBLE YOUR
TP1100 R ROTARY
UNION ON OUR
WEBSITE

SELECT YOUR LEFT-SIDE CONNECTION



YOUR ROTARY UNION



SELECT YOUR RIGHT-SIDE CONNECTION



TP1100 R ADJUSTABLE ROTARY UNION

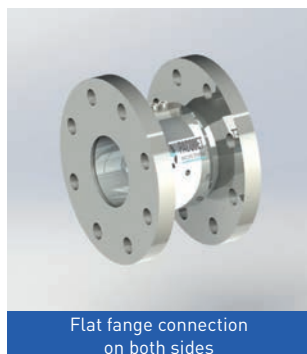
ADJUSTABLE ROTARY UNION TO BE COMBINED WITH OTHER WELD-ON PARTS

Up to DN600 on request

CONFIGURATION EXAMPLES



Weld-neck flange connection
on both sides



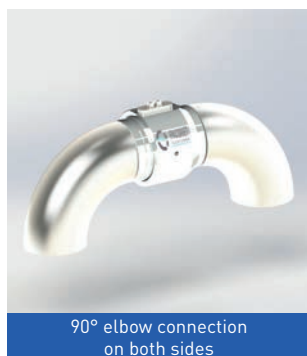
Flat flange connection
on both sides



Female sleeve and 90° elbow
connection



Male end cap and female sleeve
connection



90° elbow connection
on both sides



Male end cap and weld-neck
connection



Female sleeve connection
on both sides



Weld-neck flange and
male end cap connection

Rotating joint delivered with maintenance manual and assembly instructions (excluding welding instructions) - Equipped with a lubricator: lubrication intervals to be defined according to your operating conditions - Maintenance kits available on request - Other possible configurations: contact us - The operating conditions are interdependent: do not combine pressure, speed and temperature - Cycle time: contact us - Terms of use available on our site.



HELP US FIND THE ROTARY UNION YOU ARE LOOKING FOR.
OUR DESIGN OFFICE IS HERE TO SUPPORT YOU.

Contact us !